

NEW PRODUCT

**Ultrasafe**  
Stainless Steel  
Security Mesh

*No.1 for Safety!*



***Designed to protect,  
built to last!***

100% NEW ZEALAND OWNED AND OPERATED

PHONE - 0800 500 338 • [www.ullrich.co.nz](http://www.ullrich.co.nz)



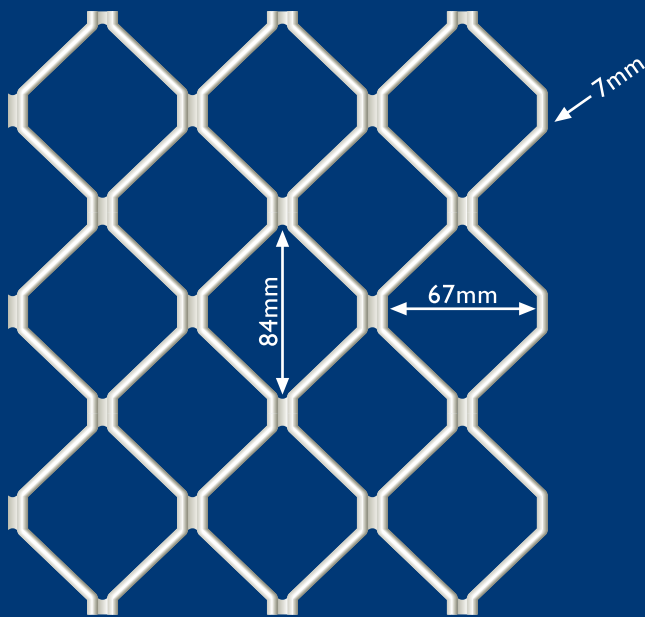
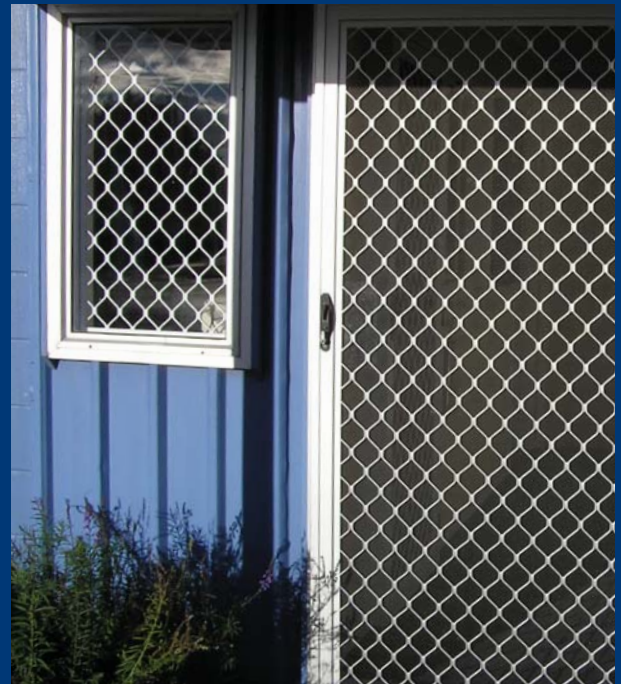
## SECURITY DOORS AND WINDOWS

The Ullrich Security Doors and Window System is designed for application to domestic and commercial buildings to provide an extra barrier against unwanted intrusion, trespass, burglary and home invasion, while allowing unrestricted airflow and vision out-doors.

The system comprises a complete range of extrusions, fittings and accessories ready for custom-fitting to individual specifications and design requirements.

The finished installation is lightweight for ease of use, yet sturdy and secure. Anodised or powder coated in a range of colours provides an attractive, fashionable finish.

Aluminium-alloy manufacturing materials are specially selected for extra durability, toughness and tamper resistance. Heavy duty 7mm Diamond Pattern grille panels exceed the sheer load test and specification requirements of ANZS 2803 and are suitable for inclusion in door framing manufactured and tested to this standard.



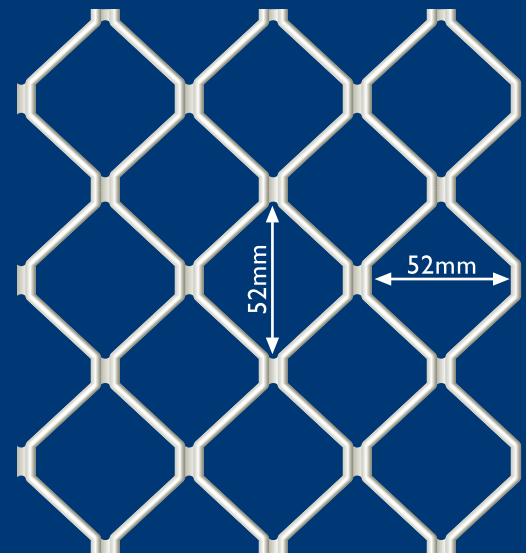
### SECURITY MESH (AS2803) '007'

#### Panel Sizes

2000 x 750 x 7mm  
4000 x 750 x 7mm  
2000 x 920 x 7mm  
4000 x 920 x 7mm  
2000 x 1250 x 7mm  
4000 x 1250 x 7mm

#### Available in:

Mill Finish  
Silver Anodised  
Bronze Anodised  
White Powder Coated



### SECURITY MESH (AS2803) '009'

#### Panel Sizes

2000 x 1160 x 9mm

#### Available in:

Mill Finish only

## ULLRICH INSECT MESH: PRODUCT INFORMATION

### COMMERCIAL APPLICATIONS

For doors, windows and partitions in workplaces, storage areas and public buildings, where intrusion of insects is detrimental to comfort and hygiene and where natural airflow is desirable:

Kitchens and food preparation areas  
 Garden restaurants, patio bars and cafés  
 Hotel and motel dining and accommodation rooms  
 Factory cafeterias  
 Hospitals and medical facilities  
 Food processing plants and storage areas  
 Food retail outlets  
 Roll curtains for tent manufacturing (fibreglass mesh)

### DOMESTIC APPLICATIONS

All dwelling apertures or partitions where intrusion of insects is detrimental to living comfort and hygiene, and where natural airflow is desirable:

Main entrances  
 Kitchens  
 Dining rooms  
 Living rooms and bedrooms  
 Breeze-ways  
 Conservatories  
 Summer houses  
 Covered decks and patios  
 Pergola walls



### MATERIALS

Aluminium

### COLOURS

Silver treated  
 Black painted

### ROLL WIDTHS

610 mm  
 710 mm  
 760 mm  
 810 mm  
 910 mm  
 1070 mm  
 1220 mm  
 1520 mm  
 1830 mm

### MESH SIZES

18 x 14 x 0.009"  
 18 x 16 x 0.009"  
 18 x 16 x 0.10"

Fibreglass

Black  
 Grey

610 mm  
 710 mm  
 760 mm  
 810 mm  
 910 mm  
 1070 mm  
 1220 mm  
 1520 mm  
 1830 mm

18 x 14 x 0.009"  
 18 x 16 x 0.009"  
 18 x 16 x 0.10"

Stainless steel

Natural

910 mm  
 1220 mm

18 x 14 x 0.009"  
 18 x 16 x 0.009"  
 18 x 16 x 0.10"

### ROLL LENGTHS

Standard 30-metre rolls, individually wrapped. Other roll lengths may be available on request

**EXTRUSION PROFILES** (drawings not actual size)

**DIE NUMBER**



**UA 5655**  
DOOR FRAME  
Use Stake 5971 - Orange  
kg/m 0.763 P 230



(ALSO AVAILABLE PREPUNCHED FOR LOCK)

**UA 1377**  
DOOR FRAME  
Use Stake 1864 - Black  
kg/m 0.715 P 240



**UA 1738**  
DOOR FRAME  
Use Stake 1864 - Black  
kg/m 0.581 P 236



**UA 4112**  
SECURITY DOOR FRAME  
Use Stake 1864 - Black  
kg/m 0.681 P 233



**UA 1943**  
SLIDING DOOR  
kg/m 0.467 P 212



**UA 1942**  
SLIDING DOOR  
kg/m 0.773 P 298



**UA 3592**  
SECURITY WINDOW FRAME  
Use Stake 1379 - Red  
kg/m 0.371 P 146



**UA 3929**  
SECURITY JOINER  
kg/m 0.301 P 182

**EXTRUSION PROFILES** (drawings not actual size)**DIE NUMBER**

**UA 4598**  
SECURITY WINDOW FRAME  
Use Stake I379 - White  
kg/m 0.393 P 118



**UA 4599**  
SECURITY WINDOW JOINER  
kg/m 0.357 P 160



**UA 1310**  
WOOLPILE STOP  
kg/m 0.147 P 74



**UA 1649**  
SECURITY WINDOW FRAME  
Use Stake I379 - Blue  
kg/m 0.399 P 197



**UA 1374**  
SECURITY CHANNEL  
kg/m 0.151 P 76



**UA 1375**  
SECURITY FIXFRAME  
kg/m 0.269 P 142



**UA 1376**  
SECURITY JOINER  
kg/m 0.257 P 129



**UA 1387**  
SECURITY WINDOW FRAME  
Use Stake I379 - Blue  
kg/m 0.282 P 125



**UA 6246**  
WINDOW FRAME  
Use Stake FLYFACS3PLGREY  
kg/m 0.257 P 105



Wool Pile PR13

**UA 1349**  
DRAUGHT EXCLUDER  
Use Woolpile PR13  
kg/m 0.123 P 72

**EXTRUSION PROFILES (drawings not actual size)****DIE NUMBER**

**UA 1386**  
WINDOW FRAME  
Use Stake 1379 - Blue  
kg/m 0.237 P 95



**UA 1384**  
TOP CHANNEL  
kg/m 0.120 P 74



**UA 1383**  
BOTTOM CHANNEL  
kg/m 0.093 P 58



**UA 1343**  
SLIDING DOOR TEE  
kg/m 0.173 P 66



**UA 1388**  
FLYDOOR  
Use Fly Stake - Plastic  
kg/m 0.318 P 109



**UA 1389**  
FLYWINDOW  
Use Stake 1513 - Green  
kg/m 0.234 P 70



**UA 1610**  
FLYWINDOW  
Use Stake 1513 - Green  
kg/m 0.235 P 76



**UA 1355**  
BOTTOM CHANNEL  
kg/m 0.136 P 67



**UA 1609**  
TOP CHANNEL  
kg/m 0.149 P 84



**UA 5636**  
DOOR FRAME  
Use Stake 5633 - Yellow  
kg/m 0.499 P 142



**UA 1385**  
FRAME  
Use Stake 1379 - Blue  
kg/m 0.278 P 104

**EXTRUSION PROFILES (drawings not actual size)**

**DIE NUMBER**



**UA 5637**  
FLYWINDOW  
Use Stake 5635 - 6.0mm thick - Brown  
kg/m 0.251 P 96



**UA 5638**  
FLYWINDOW  
Use Stake 5635 - 8.5mm thick - Purple  
kg/m 0.256 P 103



**UA 1054**  
FLYWINDOW  
Use Stake 1513 - Green  
kg/m 0.331 P 124



**UA 5526**  
FLYSCREEN SLIDING DOOR CHANNEL  
kg/m 0.468 P 200



**UA 5699**  
FLYWINDOW TRACK  
kg/m 0.209 P 99



**UA 3703**  
DOOR TRACK (glides available)  
kg/m 0.116 P 81



GLIDE/STOP



**UA 3614**  
CHANNEL (for 5632)  
kg/m 0.196 P 94



**UA 1731**  
ANGLE  
kg/m 0.131 P 64



**UA 1133**  
CHANNEL  
kg/m 0.311 P 147



**UA 1611**  
DOOR FRAME  
Use Flystake - Plastic  
kg/m 0.367 P 110

**EXTRUSION PROFILES (drawings not actual size)**

**DIE NUMBER**



**UA 3512**  
RAIL  
kg/m 0.611 P 300



**UA 1381**  
RAIL  
kg/m 0.730 P 320



**UA 1382**  
RAIL  
kg/m 0.361 P 200



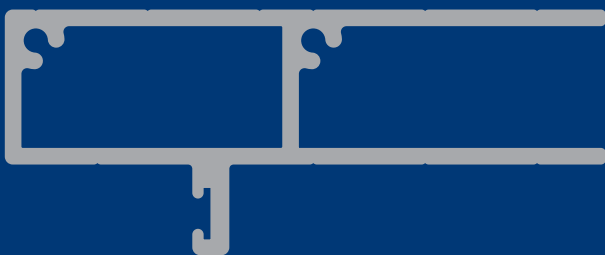
**UA 5634**  
RAIL  
kg/m 0.568 P 250



**UA 1648**  
DOOR FRAME ADJUSTER  
kg/m 0.992 P 219



**UA 2985**  
JAMB EXTENSION  
kg/m 1.011 P 492  
Option UA9758 (while stocks last)



**UA 5632**  
SECURITY DOOR ADAPTOR  
kg/m 1.050 P 318



**UA 1647**  
SECURITY DOOR ADAPTOR  
kg/m 1.152 P 326

**EXTRUSION PROFILES** (drawings not actual size)

**DIE NUMBER**



**FLYSTAKE CORNER - PLASTIC**

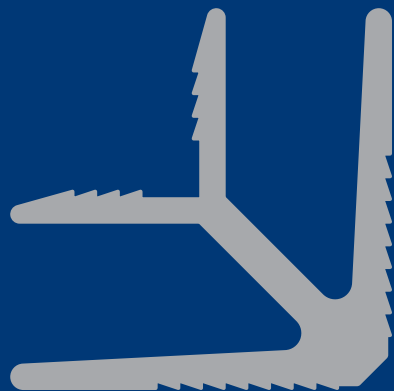
Fits 1388 & 1611  
CODE: FLYSTAKE



**UA 5635**

CORNER STAKE  
8.5mm thick fits 5638 - Purple  
6.0mm thick fits 5637 - Brown  
kg/m 1.256 P 186

Cut to size



**UA 5633**

STAKING ANGLE  
Fits 5636 - Yellow  
kg/m 1.725 P 352

Cut to size



**UA 1864**

STAKING ANGLE  
Fits 1377 & 1738 - Black  
kg/m 3.536 P 527

Cut to size

**EXTRUSION PROFILES** (drawings not actual size)

**DIE NUMBER**



**UA 1379**

STAKING ANGLE

Fits 1385, 1386, 1387, 1649 - Blue

Fits 3592 - Red

Fits 4598 - White

kg/m 2.243 P 267

Cut to size



**UA 5971**

STAKING ANGLE

Fits 5655 - Orange

kg/m 4.524 P 496

Cut to size



**CORNER STAKE - PLASTIC**

Fits 6246

CODE: FLYFACS3PLGREY

or

CODE: CS3



**UA 1513**

STAKING ANGLE

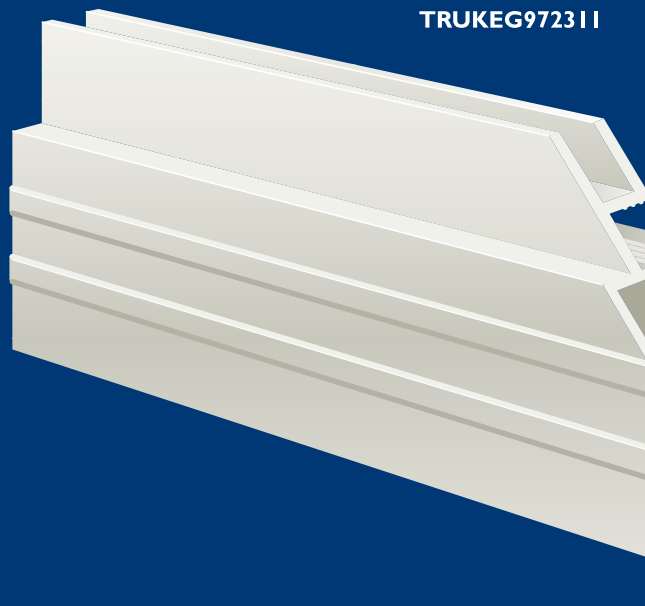
Fits 1054, 1389, 1610 - Green

kg/m 1.416 P 196

Cut to size

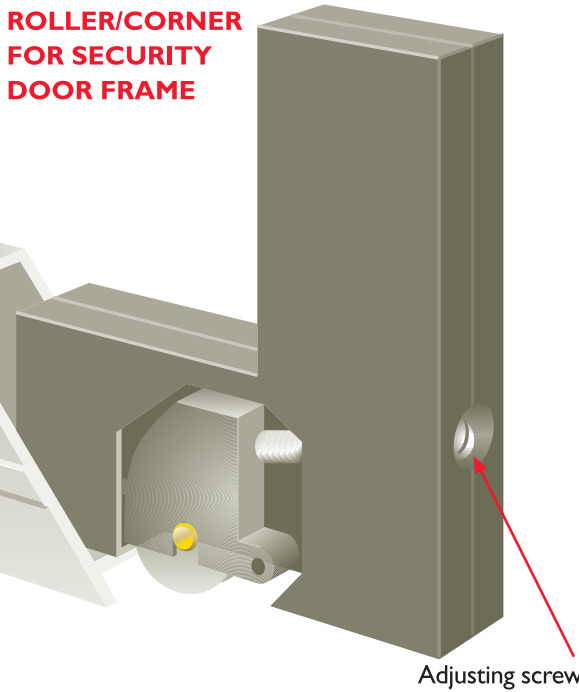
**DOOR AND WINDOW ACCESSORIES**

**DESCRIPTION**

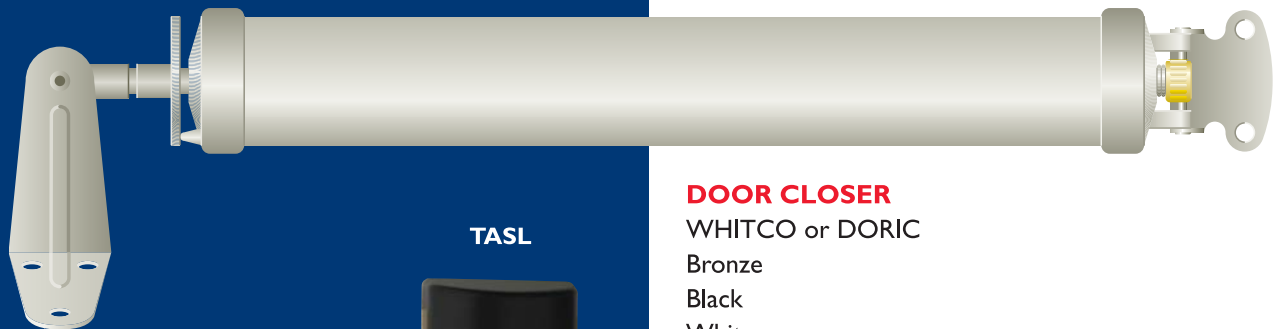


**TRUKEG9723 I I**

**ROLLER/CORNER  
FOR SECURITY  
DOOR FRAME**



Adjusting screw



**FLYDOORCLOS**

**DOOR CLOSER**  
WHITCO or DORIC  
Bronze  
Black  
White



**TASL**

**DOOR LOCKS**

TASMAN MKIII - Black

Triple Lock Kits - Suits Tasman Lock

LIECHARDT SLIDING DOOR LOCK - Black

Anti Jemmy Kits available

Clear Polycarbonate Lock Protectors available

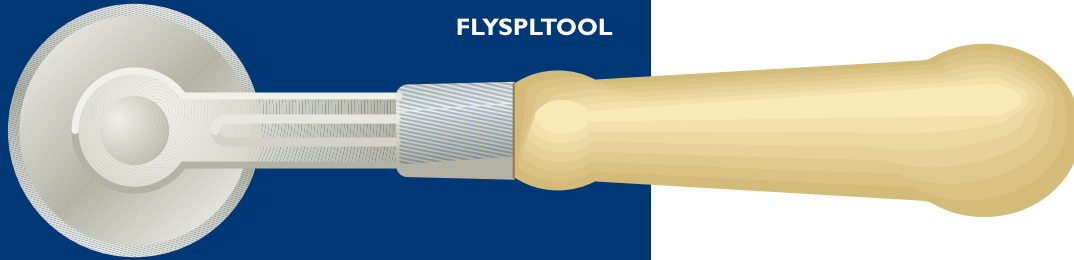
"D" Plates



TASLOCK PROTECT

**(drawings not actual size)**

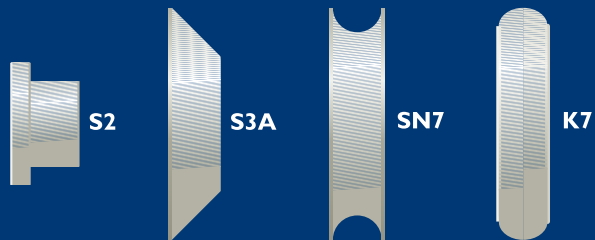
SPLINE TOOLS



FLYSPLTOOL



SN7/K7 COMBINATION



SPLINE WHEELS

- S2** Steel Wheel
- S3A** Steel Wheel
- SN7** Nylon Wheel
- K7** Steel Wheel

For additional information on any Ullrich product, either contact your Ullrich Sales Consultant, refer to the back of this brochure for your nearest Ullrich Aluminium Sales Centre, or telephone 0800 500 338 for assistance.

(drawings not actual size)

**DOOR AND WINDOW ACCESSORIES**

**NEW ZEALAND'S LARGEST RANGE**

Stainless Steel Screws

Rivets (coloured)

Drill Bits

Hinges

Hacksaw Blades

Screw Driver Bits

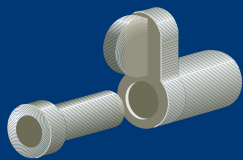
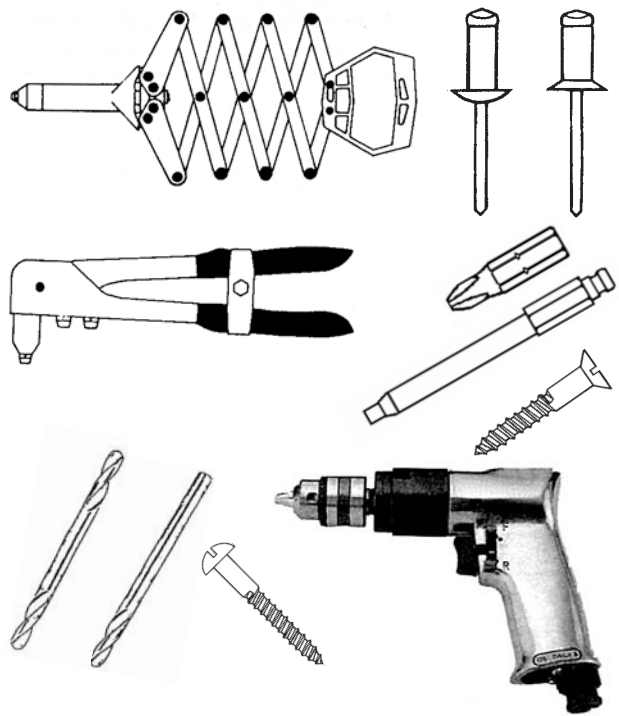
Sealants

Adhesives

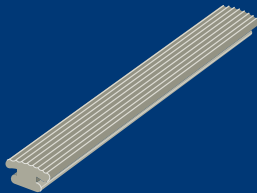
Tools - De Walt, Makita

Air Tools

**DESCRIPTION**



**FLYTURNCATCH**

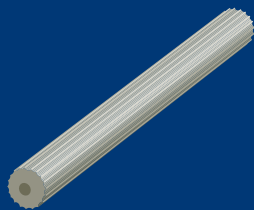


**TURNCATCHES**

Black

**CLASHING STRIP**

Vinyl



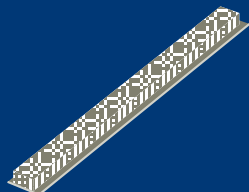
**SPLINE**

**PVC RETAINING**

**SPLINE 5.0mm, 5.5mm, 6.0mm, 6.35mm**

Grey

Black



**FLYWOOL**

**WOOL PILE**

**PB 4875/3**

4.8 - 750B

Grey

4.8 - 550B

Black

4.8 - 850B

6.9 - 900B

6.9 - 700B

6.9 - 9525ADHBL Adhesive Backed



**WOOL PILE**

**PR 13**

Fits UA1349

(drawings not actual size)

**DOOR AND WINDOW ACCESSORIES**

**DESCRIPTION**



**HSE**

**HINGES**

SECURITY DOOR STEPPED HINGE  
Black, White or Stainless



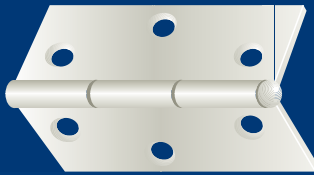
**HINGE 65**

65mm  
Black or White



**HINGE 38**

38mm  
Black or White



**7903**

**SERIES 5000 HINGE**



**WHITPULL**

**WHITPULL HANDLE**



**SECUROWINSTAY**

**WINDOW STAY**

Stainless Steel - Pair

PACKERS AVAILABLE



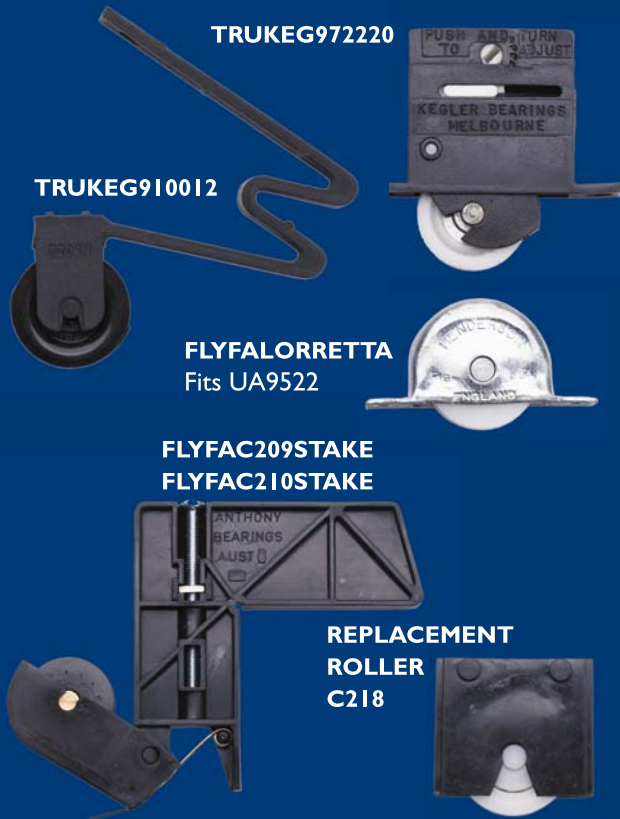
**SECINTSTAY**

**INTERLOCK WINDOW STAY**

(drawings not actual size)

**DOOR AND WINDOW ACCESSORIES**

**DESCRIPTION**



**WHEEL CARRIAGES**

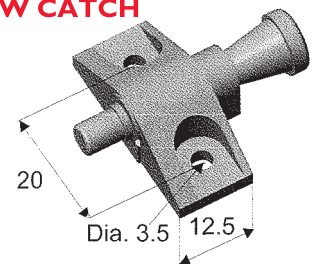


**KINGPINS**



**QUICK-RELEASE HINGES**

**REMOVABLE WINDOW CATCH  
FLYDORIC DSI 12**



**END STOP**

(drawings not actual size)

**DOOR AND WINDOW ACCESSORIES**

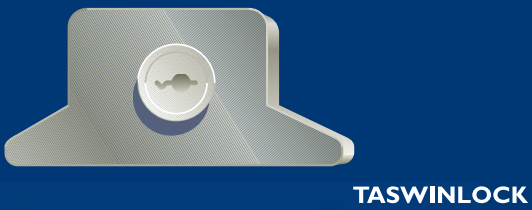
**DESCRIPTION**



**LOCK CYLINDERS**  
KEYED ALIKE  
or  
RANDOM KEYED



**PUSH LOCK**



**WINDOW LOCKS**



**PATIO BOLT**



**SLIDE PUSH LOCK**



(drawings not actual size)

## EXPERIENCE

Ullrich Aluminium has over 20 years experience in Design, Extrusion and Distribution of Aluminium in Australia, New Zealand and the Pacific Islands. We pride ourselves on our excellent designs, technical advice and after sales service.



## TESTING

Our new **Ultrasafe™** stainless steel mesh and frame has been designed/ tested to AS5039/5041-2003 which includes impact, jemmy and knife shear tests.

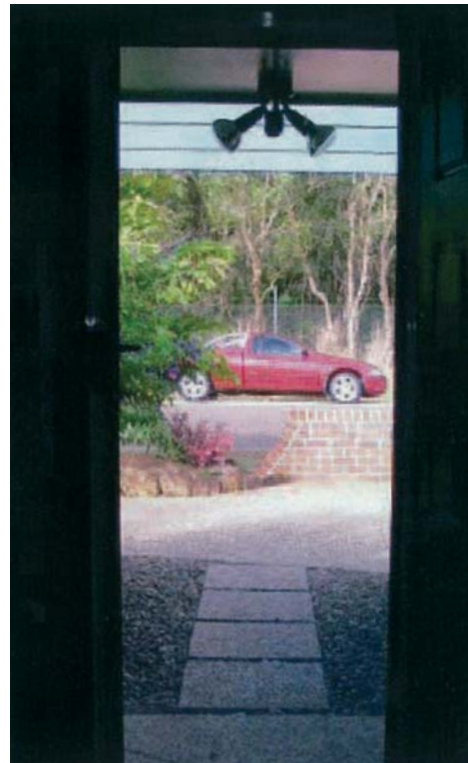
## FINISH

- Frames are available in a range of anodised or powdercoated colours.
- Screen is only available in black powdercoat.

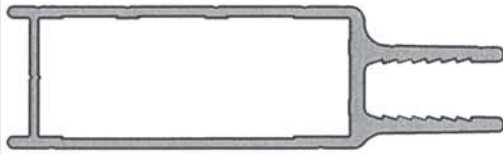


## FEATURES

- **Ultrasafe™** mesh is manufactured from high strength 316 stainless steel
- **Ultrasafe™** mesh offers high security barrier to intruders
- **Ultrasafe™** mesh allows free airflow
- **Ultrasafe™** mesh has a higher corrosion resistance than other screens or meshes
- **Ultrasafe™** mesh offers an unrestricted view



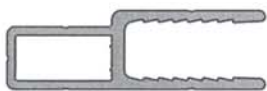
**FRAMES**



**US0001**  
DOOR FRAME



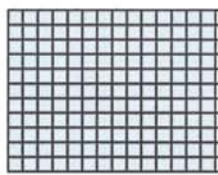
**US0002**  
11mm WINDOW FRAME



**US0003**  
9mm WINDOW FRAME

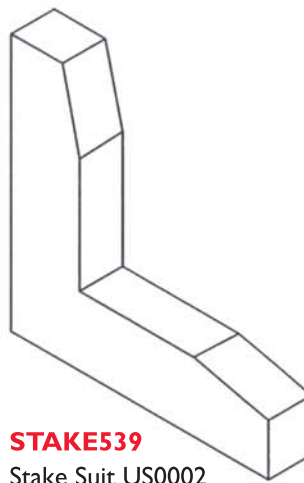


**US0004**  
MIDRAIL

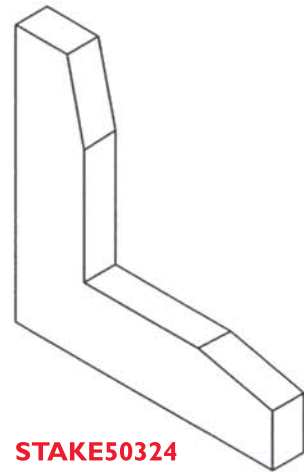


**STAINLESS STEEL MESH**  
GRADE 316, 0.8mm

**SECUS**

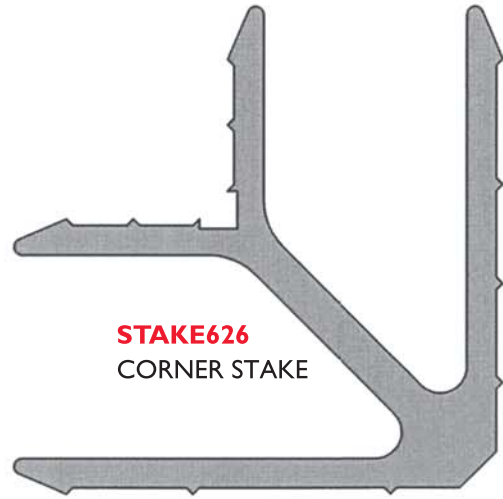


**STAKE539**  
Stake Suit US0002



**STAKE50324**  
Stake Suit US0003

**COMPONENTS**

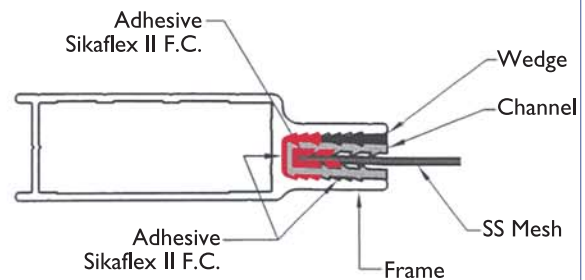
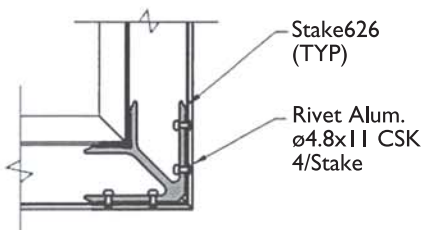


**STAKE626**  
CORNER STAKE



**PCIIBK3**  
CHANNEL - WEDGE

**Note:** To comply with AS5039/5041-2003 the door must be manufactured as shown on drawing SEC0006



## ULLRICH ALUMINIUM SALES CENTRES

### WHANGAREI

2 Gumdigger Place  
PO Box 1694 Whangarei 0140  
Tel 09 438 7380  
Fax 09 438 4587  
Email: whgrsls@uacl.co.nz

### SILVERDALE

24 Anvil Road Silverdale  
Hibiscus Coast 0932  
Tel 09 427 0017  
Fax 09 427 0030  
Email: silvsales@uacl.co.nz

### AUCKLAND WEST

65 The Concourse  
Henderson 0610  
Tel 09 836 6061  
Fax 09 835 1365  
Email: hendsls@uacl.co.nz

### AUCKLAND CENTRAL

33-37 Great South Road  
PO Box 222 44 Otahuhu 1640  
Tel 09 276 3789  
Fax 09 276 7814  
Email: alkalum@uacl.co.nz

### AUCKLAND SOUTH

118 Wiri Station Road  
PO Box 98 843 SAMC  
Manukau City 2240  
Tel 09 262 6262  
Fax 09 262 6266  
Email: alkalum@uacl.co.nz

### EXPORT DIVISION

118 Wiri Station Road  
PO Box 98 843 SAMC  
Manukau City 2240  
Tel 09 262 6262  
Fax 09 262 6267  
Email: exports@uacl.co.nz

### BUILDING PRODUCTS DIVISION

#### ULLTRACLAD

Tel Russ Gray 021 541 563  
Fax 07 346 8215  
Email: russellg@uacl.co.nz

### TAURANGA

17 McDonald Street  
PO Box 4492 Mt Maunganui 3149  
Tel 07 575 3499  
Fax 07 575 0218  
Email: taurgsls@uacl.co.nz

### HAMILTON

39-45 Maui Street  
PO Box 1138 Hamilton 3240  
Tel 07 849 2909  
Fax 07 849 2589  
Email: hamsls@uacl.co.nz

### ROTORUA

124 Riri Street  
PO Box 965 Rotorua 3040  
Tel 07 346 8213  
Fax 07 346 8215  
Email: rotsls@uacl.co.nz

### NAPIER

Cnr Niven & Edmundsen Streets  
PO Box 695 Napier 4140  
Tel 06 843 3114  
Fax 06 843 3185  
Email: napsls@uacl.co.nz

### NEW PLYMOUTH

217 Courtenay Street  
PO Box 8023 New Plymouth 4342  
Tel 06 759 9120  
Fax 06 759 1598  
Email: nplythsls@uacl.co.nz

### PALMERSTON NORTH

8 Railway Road  
PO Box 4054 Palmerston North 4442  
Tel 06 356 2007  
Fax 06 356 8539  
Email: pnthsls@uacl.co.nz

### WELLINGTON

1 Cornish Street Petone  
Private Bag Te Puni MC 5045  
Tel 04 568 8188  
Fax 04 569 8759  
Email: wgtsls@uacl.co.nz

### NELSON

6a Forests Road  
PO Box 2233 Stoke 7041  
Tel 03 547 4103  
Fax 03 547 8343  
Email: nelsales@uacl.co.nz

### CHRISTCHURCH

4 Iversen Terrace  
PO Box 100 50 Christchurch 8145  
Tel 03 366 7939  
Fax 03 379 5910  
Email: chchs@uacl.co.nz

### TIMARU

60-64 Racecourse Road Timaru  
PO Box 2126 Washdyke 7941  
Tel 03 688 7649  
Fax 03 688 7659  
Email: timrsls@uacl.co.nz

### DUNEDIN

391 Kaikorai Valley Road  
PO Box 5010 Dunedin 9058  
Tel 03 453 0679  
Fax 03 453 5958  
Email: duns@uacl.co.nz

### INVERCARGILL

25 Bond Street  
PO Box 1681 Invercargill 9840  
Tel 03 218 4124  
Fax 03 218 4024  
Email: invsls@uacl.co.nz

For additional information on any Ullrich product, either contact your Ullrich Sales Consultant, refer to the back of this brochure for your nearest Ullrich Aluminium Sales Centre, or telephone 0800 500 338 for assistance.

ULLRICH ALUMINIUM CO LTD  
PO Box 98 843 SAMC  
Manukau City 2240 New Zealand  
Tel 09 262 6262 Fax 09 262 6265  
alkalum@uacl.co.nz  
www.ullrich.co.nz





Phone for your nearest  
**ULLRICH ALUMINIUM SALES CENTRE**

**AUSTRALIA - 1300 650 075**

**NEW ZEALAND - 0800 500 338**

- ALUMINIUM EXTRUSIONS
- ROLLED PRODUCTS
- FASTENINGS
- LADDERS
- SCAFFOLDS
- ULLTRACLAD CLADDING
- WINTEC WINDOWS & DOORS
- BUILDING PRODUCTS
- DECORATIVE METALS
- TEKNA MACHINERY

**Map key:**  
 + MANUFACTURING  
 ⊕ SALES & DISTRIBUTION  
 \* EXTRUSION PLANT

Representative and franchised operations throughout the South Pacific

ULLRICH ALUMINIUM PTY LTD  
 PO Box 2182 Smithfield NSW 2164  
 185-187 Woodpark Rd Smithfield Australia  
 Tel +61 2 8787 7400 Fax +61 2 9725 2784  
 ullrich@ullrich.com.au www.ullrich.com.au

ULLRICH ALUMINIUM CO LTD  
 PO Box 98 843 SAMC  
 Manukau City 2240 New Zealand  
 Tel +64 9 262 6262 Fax +64 9 262 6265  
 alkalum@uacl.co.nz www.ullrich.co.nz