

ULLRICH ALUMINIUM CASTING CATALOGUE



Edition 2

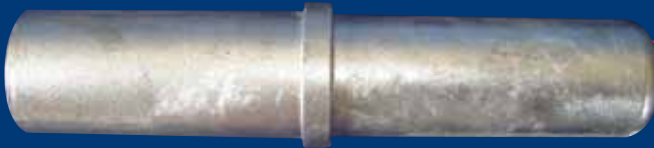




Contents

Section 1 - 1800 Series Scaffold	1
Section 2 - Marine	3
Section 3 - Miscellaneous	5
Section 4 - Ladder Accessory's	8
Section 5 - Fencing	10
Section 6 - Leverlock Scaffold Parts	14
Section 7 - Anodes	19

Section I - 1800 Series Scaffold



Code: UCI950
SPIGGOT 1800
Scaffold spigot - Fits UA1246 (50 x 2 tube)

Code: UCI900
OLD SHORT T
Scaffold Tee - Fits UA1246 (50 x 2 tube)
- both branches



Code: UCI901
OLD LONG T
Scaffold Tee - Fits UA1246 (50 x 2 tube) - both branches

Code: UCI902
OLD LONG SLEEVES
Scaffold sleeve long - Fits UA1246 (50 x 2 tube)



Code: UCI985
SCAFFOLD UNI JOINT 1800 SERIES
Universal Joint - Fits UA1246 (50 x 2 tube)

Section I - I800 Series Scaffold



Code: UC1903-1800

SNAPLOCK ASSY 1246 TUBE COMPLETE

Snaplock assembly - fits into and over UA1246
(50 x 2 tube)

Code: UC1903A

OLD SNAPLOCK COMPLETE

Old snaplock - fits into and over UA1246 (50 x 2 tube)
- superseded by UC1903-1800.



Code: UC1904

OLD TONGUE

Spare lever/tongue for UC1903A



Code: UC1905

OLD PLATFORM HOOK

Fits UA1730 Scaffold Section



Code: UC1911

OLD SHORT SLEEVE

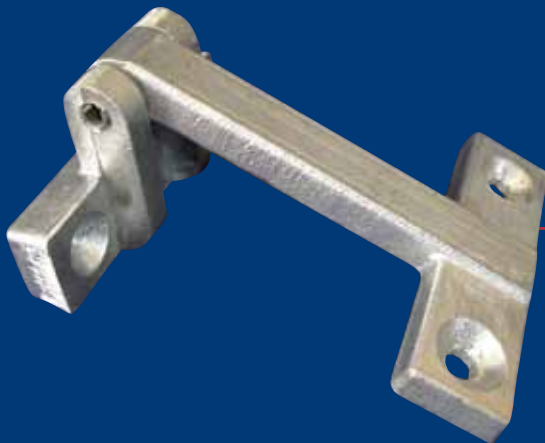
Scaffold sleeve short - fits over UA1246 (50 x 2 tube)

Section 2 - Marine



Code: UCI912
OFFSET HINGE
Cast Aluminium Hinge

Code: UCI913
FLAT HINGE
Cast Aluminium Hinge



Code: UCI915
CANOPY HINGE
Cast Aluminium Hinge

Code: UCI916
ROPE HOOK
Used on boats & trailers (not certified)



Section 2 - Marine



Code: UCI917
ROWLOCK BLOCK
Fits on dinghies for oars

Code: UCI918
BOW RAIL END CAP
For rail around boat windscreens



Code: UCI934
BOAT HOOK
For retrieving ropes on boats



Code: UCI924
BOLLARD
Used on boats





Section 3 - Miscellaneous



Code: UC1914

WC PARTITION FEET

Toilet Partition feet. Height 150mm

Code: UC1906

UAC NAMEPLATE

Can be welded/screwed/glued onto any Ullrich product.

Dimensions 51 x 90 x 5mm thick



Code: UC1907

AUSTRALIAN PLANK CAP

Used for ends of trestle planks in Australia

Code: UC1908

NZ PLANK CAP

Used on end of UAC Aluminium trestle plank UA2764



Section 3 - Miscellaneous



Code: UCI919

L. MUDGUARD CLAMP 50MM

For truck mudguards. Fits UA1246
(50 x 2 tube)

Code: UCI936

MUDGUARD BASES

Bolts to truck Chassis - for use with mudguard clamps



Code: UCI933

WELL END CAP

End cap for rubber of supermarket trolley buffer rails



Code: UCI968

SAW HORSE END CAP

Used for Australian saw horses



Section 3 - Miscellaneous



Code: UCI922
LARGE FLAGPOLE TOP
Fits onto UA1247 (100 x 3 tube)

Code: UCI921
SMALL FLAGPOLE TOP
Fits onto UA1251 (50 x 3 tube)

Code: UCI946
SEAT END CAP TOP
Fits seat back extrusion



Code: UCI945
SEAT END CAP
Fits UA4473 seating section



Section 4 - Ladder Accessory's



Code: UC1925

MEDIUM LADDER BLOCK

Fits SL ladder stiles & UAI191 (40 x 6 flat). Used for pit ladders.

Code: UC1926

LARGE LADDER BLOCK

Fits SL ladder stiles & UAI192 (50 x 6 flat). Used for pit ladders.



Code: UC1927

SCAFFOLD LADDER HOOK

Fits into side stile of scaffold ladder and hooks onto scaffold tube



Code: UC1928

NO 2 LADDER HOOK (EACH SIDE)

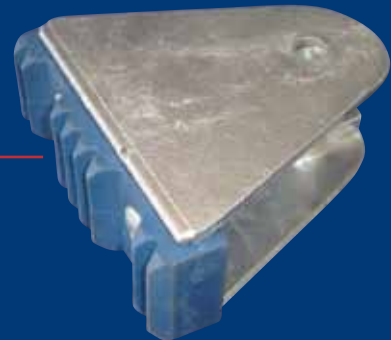
Used on GRDE S2 ("D" rung)



Section 4 - Ladder Accessory's



Code: UCI929
NO 3 LADDER HOOK (EACH SIDE)
Used on DE and TE



Code: UCI931
SWIVEL FOOT
Fits onto bottom of ladder



Code: UCI935A
TRESTLE HINGE COMPLETE
Used on tradesman trestles

Code: UCI319A
SCAFFOLD SNAPLOCK FLAT ASS
Flat fits into Ladder side stile DE & SL



Section 5 - Fencing



Code: UCI932
AK.SMALL. FENCE BASE

Code: UCI941
SPEARS

Fencing decorative spears - fit into UA1968 (20 x 1.6 tube)

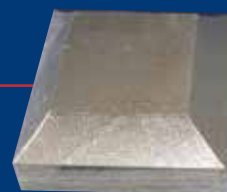


Code: UCI942
MODULAR BRACKET

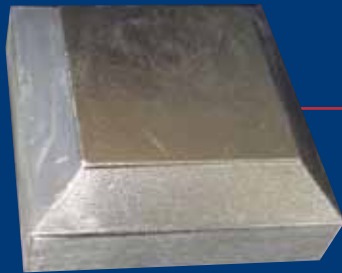
Used for fencing - fits into UA1988 (20 x 40 x 1.6 RHS) & UA2132/2131 Fence extrusion

Code: UCI943
FENCE CAP 50MM

Fence post cap - fits UA1214 (50 x 3 square tube)



Section 5 - Fencing



Code: UCI944
FENCE CAP 75MM
Fence post cap - fits UA1215 (75 x 3 square tube)

Code: UCI947
LARGE GATE HINGE
Mates with UCI948



Code: UCI948
SMALL GATE HINGE BLANK
Mates with UCI947 & UCI948A



Code: UCI948A
SMALL GATE HINGE ROUND HOLE
Mates with UCI948



Section 5 - Fencing



Code: UCI963

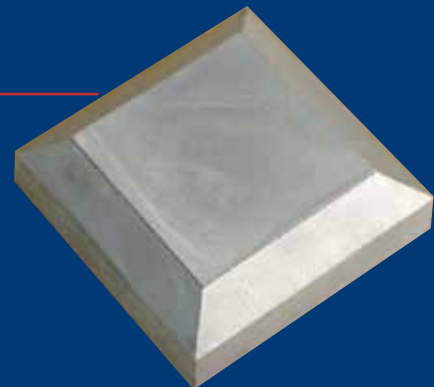
1/2 MODULAR BRACKET

Used for fencing - fits over UA1988 (20x40x1.6 RHS)
& UA2132/2131 fence rail extrusion

Code: UCI940

FENCE CAP

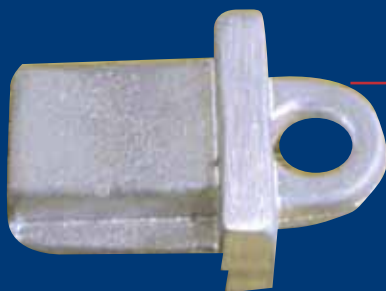
Fence post cap - fits UA1213 (100x3 square tube)
& wooden fence posts



Code: UCI939

FENCE FLEXI BRACKET FEM

Fits into UA2131/UA2132 (fence rail extrusion)
Mates with UCI938



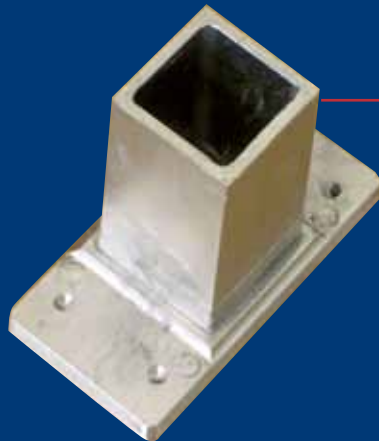
Code: UCI938

FENCE FLEXI BRACKET MALE

Bolts/Rivets to post/wall mates with UCI939



Section 5 - Fencing



Code: UCI983

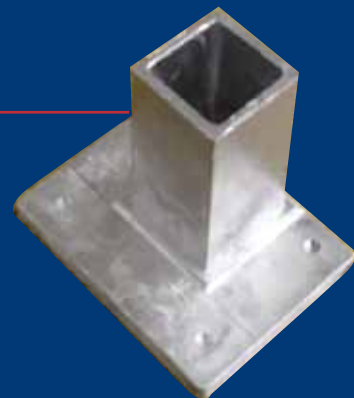
FENCE POST BASE 1/2

Fits into UA1214 (50x3 square tube)

Code: UCI982

FENCE POST BASE 3/4

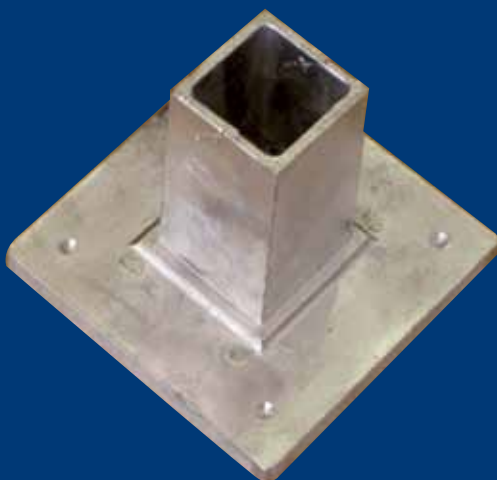
Fits into UA1214 (50x3 square tube)



Code: UCI981

FENCE POST BASE FULL

Fits into UA1214 (50x3 square tube)



Code: UCI984

FOOTBALL FENCE SPEAR

Fencing decorative football shaped spear

Fits into UA1968 (20x1.6 tube)



Section 6 - Leverlock Scaffold Parts



Code: UCI201
SCAFFOLD PLATFORM HOOK
Offset scaffold platform hook - fits into
UA3114



Code: UCI301
SCAFFOLD LOCK CAP
Leverlock female joiner - mates with UCI302 - fits onto UAI309
(48.6 x 2.3 tube)



Code: UCI302
SCAFFOLD LOCK CLAMP
Leverlock male joiner - mates with UCI301 - fits onto
UAI309 (48.6 x 2.3 tube)



Code: UCI303
SCAFFOLD 45 JOINT
Leverlock joint - fits over UA3019 (48.6 x 2.3 Tube) -
UA2268 (32 x 2 tube) spiggots onto 45 degree branch

Section 6 - Leverlock Scaffold Parts



Code: UCI304

SCAFFOLD Y JOINT

Leverlock joint - fits over UA3019 (48.6 x 2.3 Tube) - UA2268 (32 x 2 tube) spigotts onto 45 degree branches

Code: UCI306

SCAFFOLD TUBE BRKT CLAMP

Bolts to wall - Female leverlock mates with UCI301 - used for removable signs etc.



Code: UCI307

SCAFFOLD UNI JOINT

Universal joint - plugs into UA3019 (48.6 x 2.3 tube) - Used outrigger clamps & foot plates



Code: UCI308

SCAFFOLD OUTRIGGER CLAMP

Clamping jaw - part of of outrigger clamp assembly UCI802



Section 6 - Leverlock Scaffold Parts



Code: UCI309
SCAFFOLD END CAP
Plugs into UA3019 (48.6 x 2.3 tube)

Code: UCI310
SCAFFOLD T JOINT
Leverlock scaffold tee - fits UA3019
(48.6 x 2.3 tube) both branches



Code: UCI315A
SCAFFOLD SNAPLOCK ASS
Leverlock snaplock - fits into and over UA3019
(48.6 x 2.3 tube)

Code: UCI317
SCAFFOLD SINGLE END
Leverlock Scaffold sleeve - fits over UA3019 (48.6 x 2.3 tube)



Section 6 - Leverlock Scaffold Parts



Code: UC1318
SCAFFOLD DOUBLE T
Leverlock Scaffold double tee - fits UA3019
(48.6 x 2.3 tube)- all branches

Code: UC1401
SCAFFOLD WINGNUT
Has internal thread which fits threaded shafts. Used as
part of leverlock scaffold castor
(shafts not included)



Code: UC1401/I302W
SCAFFOLD WELDED SHAFT ASS
Part of leverlock castor assembly
(shafts not included)

Code: UC1402
SCAFFOLD FOOTPLATE
Compatible with scaffold threaded shafts



Section 6 - Leverlock Scaffold Parts



Code: UCI403
SCAFFOLD OUTRIGGER PLATE
Compatible with UCI307 universal joint

Code: UCI801
SCAFFOLD OUTRIGGER HANDLE
Part of outrigger clamp assembly



Code: UCI802
OUTRIGGER CLAMP COMPLETE
Fits into UA3019 (48.6 x 2.3 tube)

Code: UCI401S
SCAFFOLD SHAFT ONLY

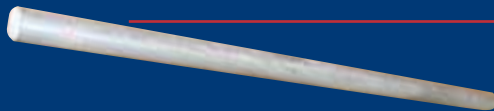
Aluminium threaded shaft used on Leverlock castor assembly. Compatible with UCI402, UCI401



Code: UCI400S
STEEL SCAFF SHAFT ONLY

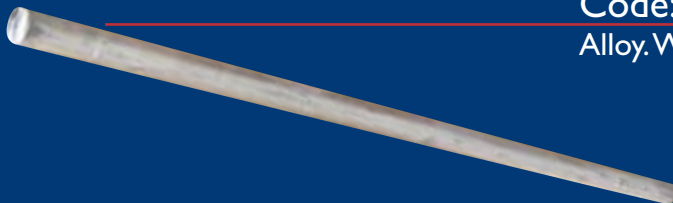
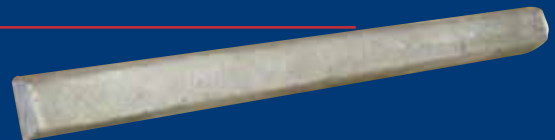
Steel threaded shaft used on Leverlock castor assembly. Compatible with UCI402, UCI401

Section 7 - Anodes



Code: ANODEI6RODZ
Zinc. 16mm diameter rod 400mm long

Code: ANODEBAR
Alloy. 400x30x20mm



Code: ANODEFS
Alloy. Water Tank Anode 950x26mm diameter

Code: ANODES1.0KG
Alloy. Teardrop



Code: ANODES2.5KGZ
Zinc. Teardrop



Code: ANODES1.5KG
Alloy. 110x145x40mm

Code: ANODES3.5KGZ
Zinc. 110x145x40mm

Section 7 - Anodes

Code: ANODES3.0KG

Alloy. 305x130x40mm

Code: ANODES7.5KGZ

Zinc. 305x130x40mm



Code: ANODES5.0KG

Alloy. 290x130x60mm

Code: ANODES12.5KGZ

Zinc. 290x130x60mm



Code: ANODES8.0KG

Alloy. 600x135x35mm

Code: ANODES20.0KGZ

Zinc. 600x135x35mm



Code: ANODES12.0KG

Alloy. 600x145x50mm

Code: ANODES30KGZ

Zinc. 600x145x50mm



ULLRICH ALUMINIUM SALES CENTRES

WHANGAREI

2 Gumdigger Place
PO Box 1694 Whangarei
Tel 09 438 7380
Fax 09 438 4587
Email: whgrsls@uacl.co.nz

SILVERDALE

24 Anvil Road Silverdale
Hibiscus Coast
Tel 09 427 0017
Fax 09 427 0030
Email: silvsales@uacl.co.nz

AUCKLAND WEST

43 The Concourse
Henderson
Tel 09 836 6061
Fax 09 835 1365
Email: hendsls@uacl.co.nz

AUCKLAND CENTRAL

33 Great South Road
PO Box 222 44 Otahuhu
Tel 09 276 3789
Fax 09 276 3342
Email: alkalum@uacl.co.nz

AUCKLAND SOUTH

118 Wiri Station Road
PO Box 98 843 SAMC
Manukau City
Tel 09 262 6262
Fax 09 262 6266
Email: alkalum@uacl.co.nz

EXPORT DIVISION

118 Wiri Station Road
PO Box 98 843 SAMC
Manukau City
Tel 09 262 6262
Fax 09 262 6267
Email: exports@uacl.co.nz

TAURANGA

17 McDonald Street
PO Box 4492 Mt Maunganui
Tel 07 575 3499
Fax 07 575 0218
Email: taurgsls@uacl.co.nz

HAMILTON

39-45 Maui St
PO Box 1138 Hamilton
Tel 07 849 2909
Fax 07 849 2589
Email: hamsls@uacl.co.nz

ROTORUA

124 Riri Street
PO Box 965 Rotorua
Tel 07 346 8213
Fax 07 346 8215
Email: rotsls@uacl.co.nz

NAPIER

Cnr Niven & Edmundsen Sts
PO Box 695 Napier
Tel 06 843 3114
Fax 06 843 3185
Email: napsls@uacl.co.nz

NEW PLYMOUTH

217 Courtenay Street
PO Box 8023 New Plymouth
Tel 06 759 9120
Fax 06 759 1598
Email: nplythsls@uacl.co.nz

PALMERSTON NORTH

8 Railway Road
PO Box 4054 Palmerston North
Tel 06 356 2007
Fax 06 356 8539
Email: pnthsls@uacl.co.nz

WELLINGTON

1 Cornish Street Petone
Private Bag Te Puni MC
Tel 04 568 8188
Fax 04 569 8759
Email: wgtsls@uacl.co.nz

NELSON

6a Forests Road
PO Box 2233 Stoke
Tel 03 547 4103
Fax 03 547 8343
Email: nelsales@uacl.co.nz

CHRISTCHURCH

4 Iversen Terrace
PO Box 100 50 Christchurch
Tel 03 366 7939
Fax 03 379 5910
Email: chchsals@uacl.co.nz

TIMARU

115 Hilton Highway
PO Box 2126 Washdyke
Tel 03 688 7649
Fax 03 688 7659
Email: timrsls@uacl.co.nz

DUNEDIN

391 Kaikorai Valley Road
PO Box 5010 Dunedin
Tel 03 453 0679
Fax 03 453 5958
Email: dunsals@uacl.co.nz

INVERCARGILL

25 Bond Street
PO Box 1681 Invercargill
Tel 03 218 4124
Fax 03 218 4024
Email: invsls@uacl.co.nz



Represented throughout Australia by Ullrich Metals Pty Ltd
PO Box 2182 Smithfield NSW 2164
185-187 Woodpark Rd Smithfield Australia
Tel 02 9725 2377 Fax 02 9725 2784

Representative and franchised operations throughout the South Pacific

ULLRICH ALUMINIUM CO LTD
PO Box 98 843 SAMC
Manukau City New Zealand
Tel 09 262 6262 Fax 09 262 6265
alkalum@uacl.co.nz
www.ullrich-aluminium.co.nz

