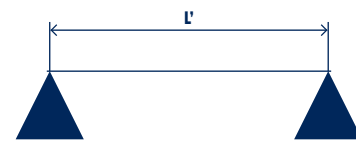


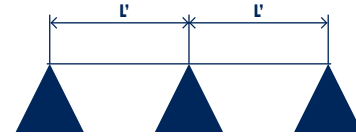
> SAFE LOAD TABLES

- > LOADS SHOWN IN SHADED AREA COMPLIES TO AS1657 WITH DEFLECTION OF SPAN/200
- > FOR PEDESTRIAN TRAFFIC A 'UDL' OF 2.5KPA (min) IS REQUIRED

PANEL 13 & 22		SPAN 'L'(mm)-SINGLE					
		500	600	700	800	900	1000
UWG13	UDL(kpa)	4.8	2.8	1.6	0.9	0.6	
	DEF(mm)	2.5	3.0	3.5	4.0	4.5	
UWG22	UDL(kpa)	9.4	6.3	4.2	2.9	2.1	1.5
	DEF(mm)	2.5	3.0	3.5	4.0	4.5	5.0



PANEL 13 & 22		SPAN 'L'(mm)-DOUBLE					
		500	600	700	800	900	1000
UWG13	UDL(kpa)	6.7	3.9	2.2	1.3	0.8	
	DEF(mm)	2.5	3.0	3.5	4.0	4.5	
UWG22	UDL(kpa)	13.0	8.8	5.9	4.1	2.9	2.1
	DEF(mm)	2.5	3.0	3.5	4.0	4.5	5.0



PANEL UWG30SL	SPAN 'L'(mm)-SINGLE											
	750	900	1050	1200	1350	1500	1650	1800	1950	2100	2250	2400
UDL(kpa)	38.7	28.4	14.1	9.5	6.6	4.8	3.6	2.8	2.2	1.8	1.4	1.2
DEF(mm)	3.3	4.5	5.2	6.0	6.7	7.5	8.3	9.0	9.7	10.5	11.3	12.0
CL(kn)	4.5	3.2	2.3	1.8	1.4	1.1	0.9	0.8	0.7	0.6	0.5	0.4
DEF(mm)	3.8	4.5	5.2	6.0	6.7	7.5	8.3	9.0	9.7	10.5	11.3	12.0

PANEL UWG30SL	SPAN 'L'(mm)-DOUBLE													
	750	900	1050	1200	1350	1500	1650	1800	1950	2100	2250	2400	2550	2770
UDL(kpa)	48.1	33.34	24.5	18.8	14.8	12.0	9.5	7.3	5.7	4.6	3.7	3.1	2.6	2.2
DEF(mm)	1.8	2.6	3.6	4.7	5.9	7.3	8.3	9.0	9.8	10.5	11.3	12.0	12.7	13.5
CL(kn)	5.6	4.7	4.0	3.5	3.1	2.6	2.1	1.8	1.5	1.3	1.2	1.0	0.9	0.8
DEF(mm)	2.0	2.9	4.0	5.2	6.6	7.5	8.3	9.0	9.7	10.5	11.3	12.0	12.7	13.5

PANEL UWG40	SPAN 'L'(mm)-SINGLE											
	750	900	1050	1200	1350	1500	1650	1800	1950	2100	2250	2400
UDL(kpa)	45.5	29.7	18.7	12.5	8.8	6.4	4.8	3.7	2.9	2.3	1.9	1.6
DEF(mm)	3.3	4.5	5.2	6.0	6.7	7.5	8.3	9.0	9.7	10.5	11.3	12.0
CL(kn)	8.5	7.1	6.1	4.7	3.7	3.0	2.5	2.1	1.8	1.5	1.3	1.2
DEF(mm)	2.7	3.8	5.2	6.0	6.7	7.5	8.3	9.0	9.7	10.5	11.3	12.0

PANEL UWG40	SPAN 'L'(mm)-DOUBLE													
	750	900	1050	1200	1350	1500	1650	1800	1950	2100	2250	2400	2550	2770
UDL(kpa)	45.5	31.6	23.2	17.8	14.0	11.4	9.4	7.9	6.7	5.8	5.0	4.1	3.4	2.9
DEF(mm)	1.3	1.8	2.5	3.3	4.1	5.1	6.2	7.3	8.6	10.0	11.3	12.0	12.7	13.5
CL(kn)	11.3	9.4	8.1	7.0	6.2	5.7	5.2	4.5	3.8	3.2	2.8	2.5	2.2	2.0
DEF(mm)	1.7	2.3	3.2	4.3	5.4	6.7	8.3	9.0	9.7	10.5	11.3	12.0	12.7	13.5

> STAIRTREADS

PANEL UWG40/ST	SPAN (mm)			
	750	900	1050	1200
UDL (2.2kn/m)	0.6	1.3	2.5	4.1
CL (1.4kn)	2.5	3.0	3.5	4.0

PANEL WIDTH = 250MM
COMMON SIZES = 614mm, 914mm, 1214mm

NOTE: MAXIMUM RECOMMENDED LENGTHS OF STAIRTREAD FOR PEDESTRIAN TRAFFIC = 1214mm

THERE'S AN ULLRICH ALUMINIUM BRANCH NEAR YOU

NEW SOUTH WALES

Sydney General Enquiries:
185-187 Woodpark Road
Smithfield, NSW 2164
+61 (2) 8787 7400

Sydney Fabrication:
185-187 Woodpark Road
Smithfield, NSW 2164
+61 (2) 8787 7468

Sydney South:
15 Blackmore Road
Smeaton Grange, NSW 2567
+61 (2) 4646 2200

Kurri Kurri:
HEZ Extrusion Plant
Lot 1, Bromage Road
HEZ Industrial Estate
Kurri Kurri, NSW 2327
+61 (2) 4937 4700

Newcastle:
6 Steel River Boulevard
Mayfield West, NSW 2304
+61 (2) 4949 2600

Bathurst:
10 Bradwardine Road
Robin Hill, NSW 2795
+61 (2) 6339 8900

Coffs Harbour:
13 Cook Drive
Coffs Harbour, NSW 2450
+61 (2) 6690 2400

Albury-Wodonga
28 Fallon Street
Albury, NSW 2640
+61 (2) 6049 9800

SOUTH EAST QUEENSLAND

Brisbane:
20 Ron Boyle Crescent
Carole Park, QLD 4300
+61 (7) 3718 1400

Banyo:
40 Buchanan Road
Banyo, QLD 4014
+61 (7) 3335 6700

Caloundra:
37 Enterprise Street
Caloundra, QLD 4551
+61 (7) 5390 7600

Gold Coast:
24 Township Drive
West Burleigh, QLD 4219
+61 (7) 5586 1500

QUEENSLAND

Cairns:
16 Spoto Street
Woree, QLD 4868
+61 (7) 4252 3200

Townsville:
5 Whitehouse Street
Garbutt, QLD 4814
+61 (7) 4720 7100

Mackay:
105-111 Maggilo drive
Paget, QLD 4740
+61 (7) 4952 4157

Rockhampton:
103 Stanley Street
Rockhampton, QLD 4700
+61 (7) 4923 8600

Wide Bay:
48B Lower Mountain Road
Dundowran, QLD 4655
+61 (7) 4196 9000

NORTHERN TERRITORY

Darwin:
114 Reichardt Road
Winnellie, NT 0820
+61 (8) 7929 8400

WESTERN AUSTRALIA

Perth:
17 King Street
Bayswater, WA 6053
+61 (8) 9473 4700

Bunbury:
33 Clifford Street
Davenport, TAS 6230
+61 (8) 9725 9900

TASMANIA

Launceston:
86 Invermay Road
Launceston, TAS 7250
+61 (3) 6327 8600

Hobart:
123 Albert Rd
Moonah, TAS 7009
+61 (3) 6278 0000

VICTORIA

Melbourne:
893 Princes Highway
Springvale, VIC 3171
+61 (3) 9567 7200

SOUTH AUSTRALIA

Adelaide:
57 Diagonal Road
Pooraka, SA 5095
+61 (8) 8300 2500

ACT REGION

Canberra:
12 Sawmill Circuit
Hume, ACT 2620
+61 (2) 6243 9700

WALKWAY GRATING

WALKWAY GRATING



UAWGB-V2



Australian Sales Centres 1300 650 075 | www.ullrich.com.au

 **ULLRICH ALUMINIUM**

EXPERIENCE

Ullrich Aluminium has over 20 years of experience in Design/Extrusion/Distribution of aluminium in Australia, New Zealand and the Pacific Islands. We pride ourselves on our excellent designs, technical advice and after sales service.

DESIGN

The Ullrich Aluminium grating has been designed to meet the requirements of Australian Standards AS1657-1992.

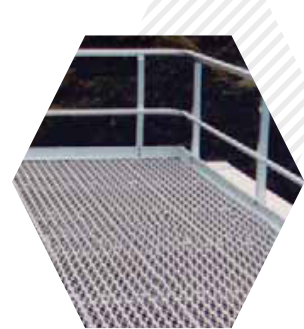
FEATURES

- > Lightweight
- > Suitable for corrosive environment
- > High resistance to slip
- > Easily machined and fabricated
- > Readily available via our national distribution outlets



USES

- > Walkways on roofs
- > Platforms (work, marine)
- > Roof A/C platforms
- > Pit grating for Wastewater Treatment Plants
- > Stair Treads



MATERIAL

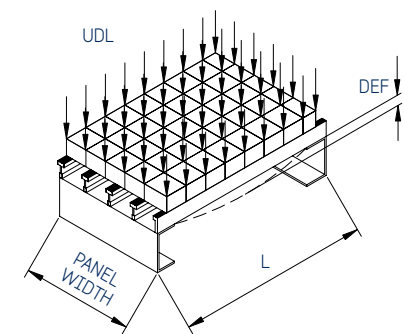
All Ullrich grating and stair tread is manufactured from Aluminium Alloy 6063 T5.

SPECIFY

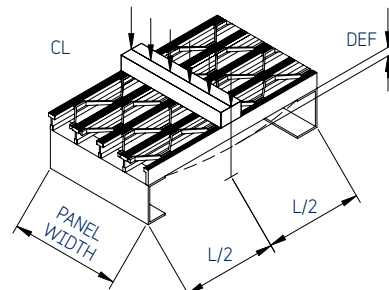
The grating panels shall be fabricated using Ullrich Aluminium grating series (select) and designed to comply with Australian Standard AS1657-1992. Fabricate/install according to Ullrich recommendation.

PANEL LOADING

The diagrams below are a graphical interpretation of panel loading shown in the safe load tables.



UDL = SAFE UNIFORMLY DISTRIBUTED LOAD (kpa)
 DEF = DEFLECTION (mm) LIMITED TO SPAN/200
 CL = CONCENTRATED LOAD (kn) SPREAD OVER WIDTH OF THE PANEL

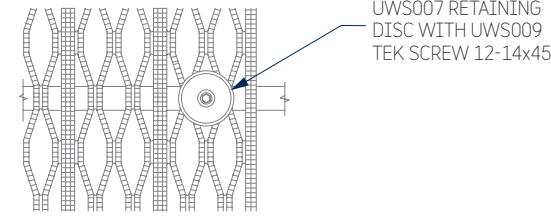


FASTENERS COMMONLY USED

- M8 HEX. HD. BOLT/NUT/FW. GRADE 316SS <
- ALL TEK SCREWS CLASS 4 FINISH <
- 14-14 HEX HD. TYPE T.T THREAD FORMING SCREW. GRADE 304SS <
- FIXING TO WOOD - 14-10 HEX HD. TEK SCREW. TYPE 17 GRADE 304SS <

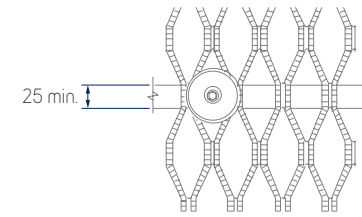
PANEL FIXING METHODS

30/40 SERIES GRATING



UWS007 RETAINING DISC WITH UWS009 TEK SCREW 12-14x45

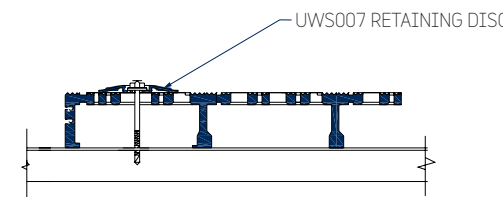
13/22 SERIES GRATING



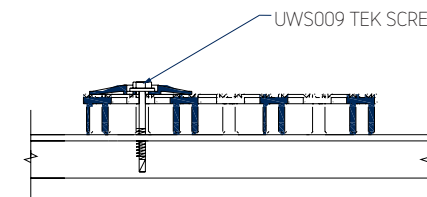
25 min.

UWS009 TEK SCREW

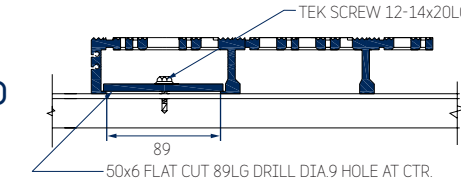
TYPICAL METHOD



UWS007 RETAINING DISC



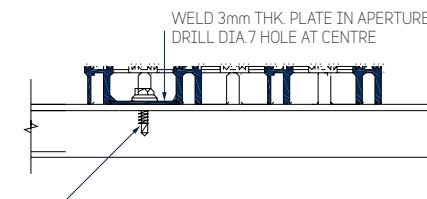
CONCEALED METHOD



TEK SCREW 12-14x20LG

89

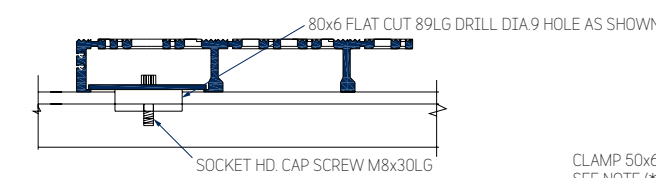
50x6 FLAT CUT 89LG DRILL DIA 9 HOLE AT CTR.



WELD 3mm THK. PLATE IN APERTURE DRILL DIA 7 HOLE AT CENTRE

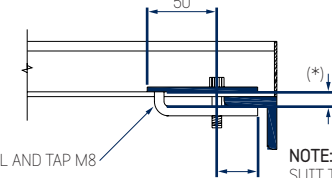
TEK SCREW 12-14x20LG

CLAMPED METHOD



80x6 FLAT CUT 89LG DRILL DIA 9 HOLE AS SHOWN

SOCKET HD. CAP SCREW M8x30LG



CLAMP 50x6 FLAT DRILL AND TAP M8 SEE NOTE (*)

NOTE: (*) BEND CLAMP TO SUIT THICKNESS BEING CLAMPED PLUS 4mm

PANEL SPECIFICATIONS

SERIES	length (mm)	width (mm)	weight (kg)	apertures
UWG13	6000	600	28.0kg/panel 7.756kg/m ²	
UWG22	6000	600	35.0kg/panel 9.757kg/m ²	

SERIES	length (mm)	width (mm)	weight (kg)	apertures
UWG30	6000	500	46.7kg/panel 15.56kg/m ²	
UWG40	6000	500	51.8kg/panel 17.27kg/m ²	
UWG40/ST	6000	250	30.4kg/panel 20.27kg/m ²	
UWG30/SL	6000	250	28.2kg/panel 18.8kg/m ²	