

PERFORATED SHEET

THERE'S AN ULLRICH ALUMINIUM BRANCH NEAR YOU



GALLERY OF PERFORATED SHEET

➤ STANDARD PERFORATED PATTERNS



NEW SOUTH WALES

Sydney General Enquiries:
185-187 Woodpark Road
Smithfield, NSW 2164
+61 (2) 8787 7400

Sydney Fabrication:
185-187 Woodpark Road
Smithfield, NSW 2164
+61 (2) 8787 7468

Sydney South:
15 Blackmore Road
Smeaton Grange, NSW 2567
+61 (2) 4646 2200

Kurri Kurri:
HEZ Extrusion Plant
Lot 1, Bromage Road
HEZ Industrial Estate
Kurri Kurri, NSW 2327
+61 (2) 4015 6800

Newcastle:
6 Steel River Boulevard
Mayfield West, NSW 2304
+61 (2) 4949 2600

Bathurst:
10 Bradwardine Road
Robin Hill, NSW 2795
+61 (2) 6339 8900

Coffs Harbour:
13 Cook Drive
Coffs Harbour, NSW 2450
+61 (2) 6690 2400

SOUTH EAST QUEENSLAND

Brisbane:
20 Ron Boyle Crescent
Carole Park, QLD 4300
+61 (7) 3718 1400

Banyo:
40 Buchanan Road
Banyo, QLD 4014
+61 (7) 3335 6700

Caloundra:
37 Enterprise Street
Caloundra, QLD 4551
+61 (7) 5390 7600

Gold Coast:
24 Township Drive
West Burleigh, QLD 4219
+61 (7) 5586 1500

QUEENSLAND

Cairns:
16 Spoto Street
Woree, QLD 4868
+61 (7) 4252 3200

Townsville:
5 Whitehouse Street
Garbutt, QLD 4814
+61 (7) 4720 7100

Mackay:
105-111 Maggiolo drive
Paget, QLD 4740
+61 (7) 4864 2100

Rockhampton:
103 Stanley Street
Rockhampton, QLD 4700
+61 (7) 4923 8600

Wide Bay:
48B Lower Mountain Road
Dundowran, QLD 4655
+61 (7) 4196 9000

NORTHERN TERRITORY

Darwin:
114 Reichardt Road
Winnellie, NT 0820
+61 (8) 7929 8400

WESTERN AUSTRALIA

Perth:
17 King Street
Bayswater, WA 6053
+61 (8) 9473 4700

Bunbury:
33 Clifford Street
Halifax, WA 6230
+61 (8) 9796 4200

TASMANIA

Launceston:
86 Invermay Road
Launceston, TAS 7250
+61 (3) 6327 8600

Hobart:
123 Albert Rd
Moonah, TAS 7009
+61 (3) 6278 0000

VICTORIA

Melbourne:
893 Princes Highway
Springvale, VIC 3171
+61 (3) 9567 7200

SOUTH AUSTRALIA

Adelaide:
57 Diagonal Road
Pooraka, SA 5095
+61 (8) 8300 2500

ACT REGION

Canberra:
12 Sawmill Circuit
Hume, ACT 2620
+61 (2) 6243 9700

Albury-Wodonga
28 Fallon Street
Albury, NSW 2640
+61 (2) 6049 9800



The following pages outline the standard range of perforated sheets available ex-stock from Ullrich Aluminium locations around Australia. Standard Sheets are listed in hold configurations (round, square etc), then material types and thicknesses for each pattern.

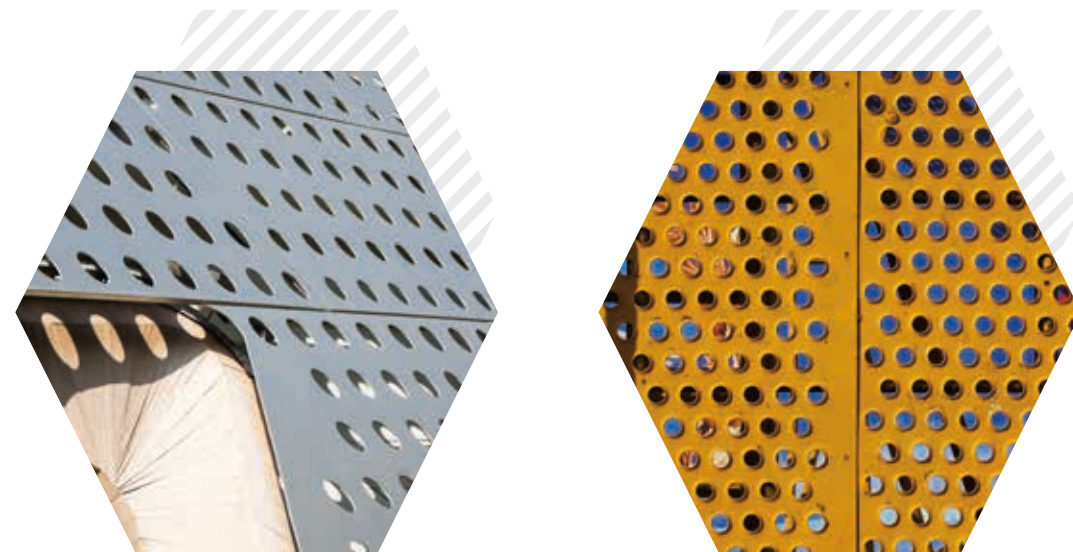
Locate the part you require using the patterns (shown as actual size). Find the pattern in the tables on the following pages, selecting the appropriate material, thickness and sheet size (where possible).

Please note:

- > Stock sheets are available in a standard size (2440mm x 1220mm) unless identified.
- > All dimensions are in millimetres and are nominal.
- > End of sheets are cut through perforations (nil margins).
- > Borders are available through Ullrich Aluminium's custom made perforation service.
- > Ullrich Aluminium reserves the right to make technical changes without notice.

Custom sheets available with a full boarder around the sheet. In addition, customized sheets can include pre-punched fixings holes for easy and fast installation.

Cut to Size and folding pricing is available upon request.



PERFORATED SHEET SELECTION GUIDE

Diameter: 1.60mm Centres: 2.54mm
Open Area 36%

Diameter: 2.00mm Centres: 3.00mm
Open Area 40%

Diameter: 2.38mm Centres: 6.74mm
Open Area 11%

Diameter: 3.25 Centres: 5.59
Open Area 30%

Diameter: 3.25 Centres: 4.52
Open Area 46%

Diameter: 4.76 Centres: 6.35
Open Area 51%

Diameter: 6.35 Centres: 8.50
Open Area 51%

Diameter: 1.60mm Centres: 3.20mm
Open Area 23%

Diameter: 2.41mm Centres: 3.66mm
Open Area 40%

Diameter: 3.25mm Centres: 4.78mm
Open Area 41%

Diameter: 3.25mm Centres: 6.10mm
Open Area 25%

Diameter: 3.97mm Centres: 5.59mm
Open Area 46%

Diameter: 4.76mm Centres: 7.92mm
Open Area 33%

Diameter: 6.35mm Centres: 9.53mm
Open Area 40%

Dia: 7.94mm Centres: 9.55 mm
Open Area 62%

Dia: 8.00mm Centres: 11.11mm
Open Area 47%

Dia: 9.5mm Centres: 14.30mm
Open Area 40%

Dia: 9.50mm Centres: 12.7mm
Open Area 51%

Dia: 12.7mm Centres: 17.27mm
Open Area 49%

Dia: 12.7mm Centres: 19.05mm
Open Area 40%

Dia: 19.05mm Centres: 25.4mm
Open Area 51%

Dia: 8.00mm Centres: 11.00mm
Open Area 48%

Dia: 11.11 Centres: 15.88
Open Area 49%

Dia: 5.56mm Centres: 12.7mm
Open Area 19%

Dia: 10.16mm Centres: 15.24mm
Open Area 36%

Dia: 25.4 mm x 4.76mm Centres: 30.16mm
Open Area 40%

Dia: 25.4mm x 6.35mm Centres: 11.18mm
Open Area 43%

Dia: 25.4mm Centres: 35.0mm
Open Area 48%